



Shirley Dean Wall

April 13, 1939 - December 3, 2022

Shirley Dean Wall, daughter of the late John and Clara Elizabeth (Reinhart) Luttrell was born on her parent's farm in Miller County on April 13, 1939. Shirley grew up and lived her entire life in Miller County, only moving across the county line into Hawkeye, Missouri, after marrying the man she loved, Kenneth Edwin Wall on April 10, 1958. The happy couple were later blessed with four children to love, spoil, and provide a loving home for. Shirley embraced taking on the responsibility of taking care of her home, and enjoyed being a loving wife, and mother. She was faithful in her commitment to care for and love her family.

Shirley, beside being a wonderful homemaker, also had worked outside her home, in housekeeping in the lake area.

Shirley also loved sewing, quilting, and was a great cook. Shirley made delicious treats, chicken, and dumplings, for her kids to enjoy when they came home from school. Shirley was also a member of the Hawkeye Homemakers Club for several years.

Shirley left for heaven on the morning of Saturday, December 3, 2022, having attained the age of eighty-three; and was preceded in death by her parents, one son, Kenny Wall, one brother, Basil Luttrell; two sisters, Lois Musick (Dean), and infant Mary Luttrell, one brother-in-law, Paul Stark, and one son-in-law, Dale Strutton.

Shirley is survived by her loving husband, Kenneth of the home; her three children, Elizabeth Strutton of Crocker, MO, Edwin Wall (Janet) of Iberia, MO, and Lyndol Wall (April) of Crocker, MO; daughter-in-law, Karen Wall of Crocker, MO; six grandchildren, Damien, Devon, Darin, Holly, Abby and Thomas; thirteen great-grandchildren; two great-great- grandchildren; three sisters, Joyce Stark of Olathe, KS, Kathie Connell (Charlie) of Crocker, MO, and Linda Butler of Waynesville, MO; a brother, Gary Luttrell (Charlene) of Brumley, MO; sister-in-law, Patsy Luttrell of Brumley, MO; a number of nieces and nephews; as well as a host of other relatives and friends.

She was truly a blessing to be around and will be sorely missed by all who knew and loved her.

Services were held at 1:00 p.m., Thursday, December 8, 2022 in the Memorial Chapel of Richland with Brother Bill Claiborn officiating. Special music included the songs, "Go Rest High On That Mountain" by Vince Gill, and "Amazing Grace" by Elvis. Damien Strutton, Darin Strutton, Thomas Wall, Ryan Newton, Lyndol Wall, and Ed Wall served as escorts. Burial followed in the Mount Union Cemetery near Brumley, Missouri.

Services were under the care and direction of Memorial Chapel of Richland.

Memorial contributions may be made in memory of Shirley Wall and can be left at Memorial Chapel of Richland for the family.

Tribute Wall



“ *Memorial Chapels and Crematory created a Tribute Video in memory of Shirley Dean Wall*



Memorial Chapels and Crematory - December 14, 2022 at 03:12 PM



“ *Shirley Dean Wall*

January 28, 2023 at 06:53 AM

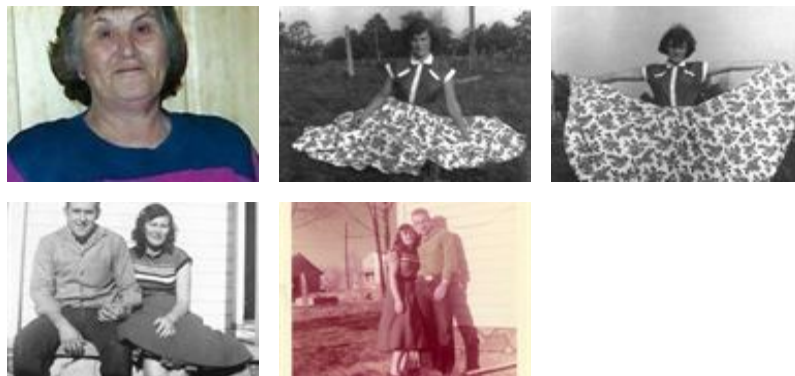


“ *Such a great person. Will be missed.*

Jacki - December 08, 2022 at 06:48 AM



“ *186 files added to the album LifeTributes*



Memorial Chapels and Crematory - December 06, 2022 at 06:27 PM

PG

“ Pulaski Camp Gideons lit a candle in memory of Shirley Wall



Pulaski County Camp Gideons - December 05, 2022 at 11:32 AM

BP

“ Such a sweet cousin. When I was really young and before Kenneth and Shirley had children, Kathie, Linda and myself spent the night with them and we had popcorn and root beer. We had so much fun, we always had lots of fun! You will be missed 😭❤️ Give all of our heavenly family and friends lots of hugs ❤️❤️. We will see one another some day really soon 🙏🙏🙏

Brenda Pinkley(Reinhart) - December 04, 2022 at 07:49 PM